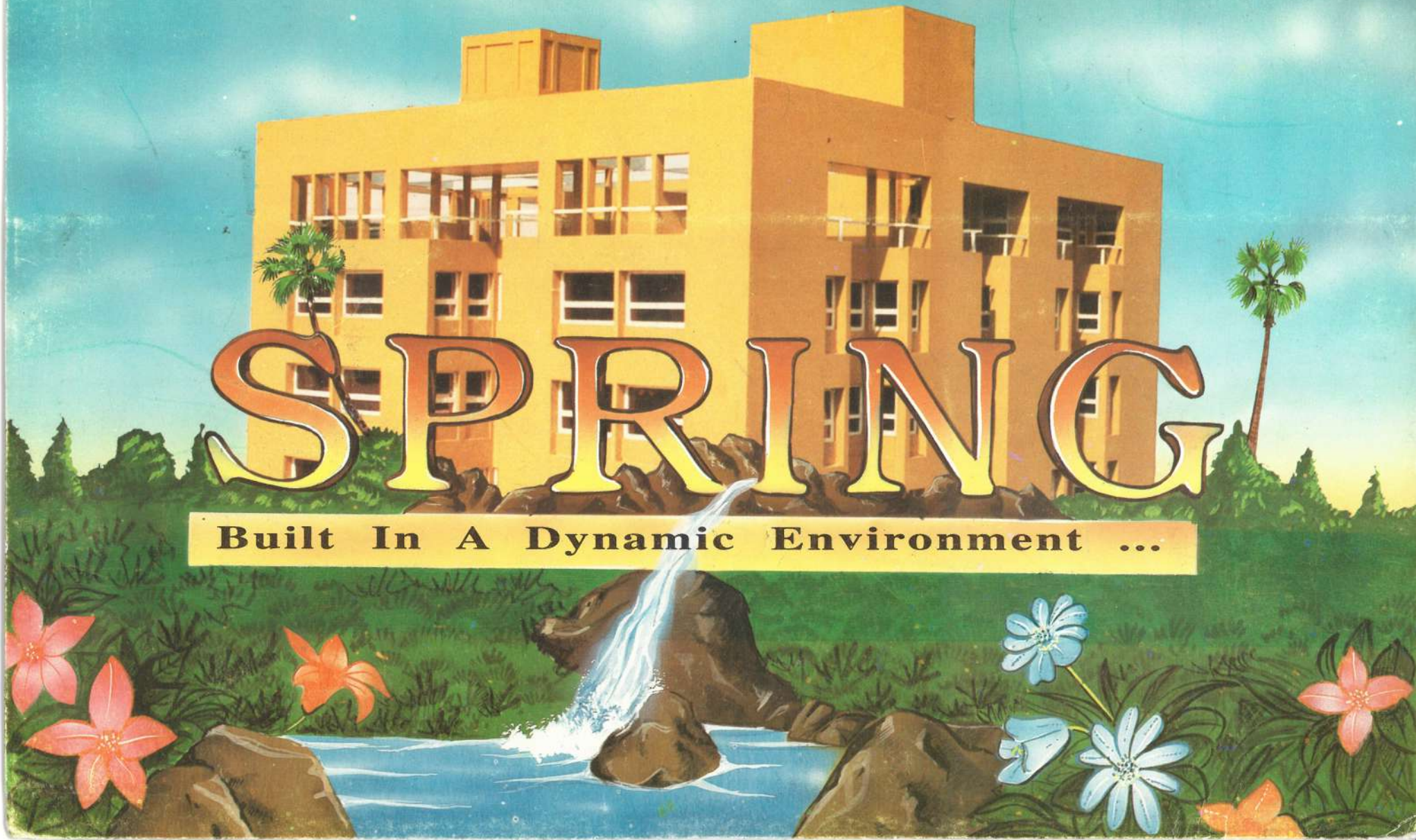


PALM

SPRING

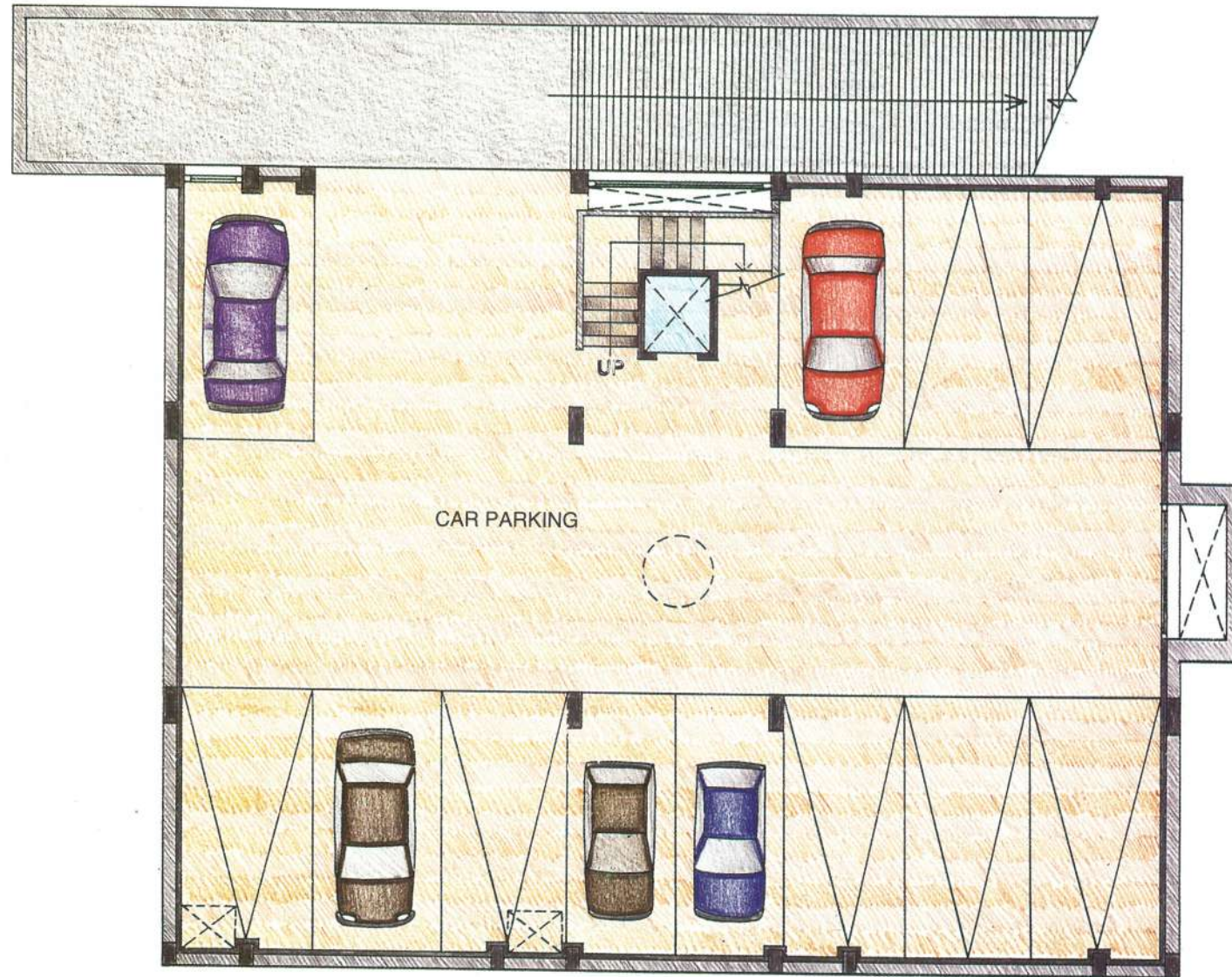
Built In A Dynamic Environment ...



# BASEMENT PLAN



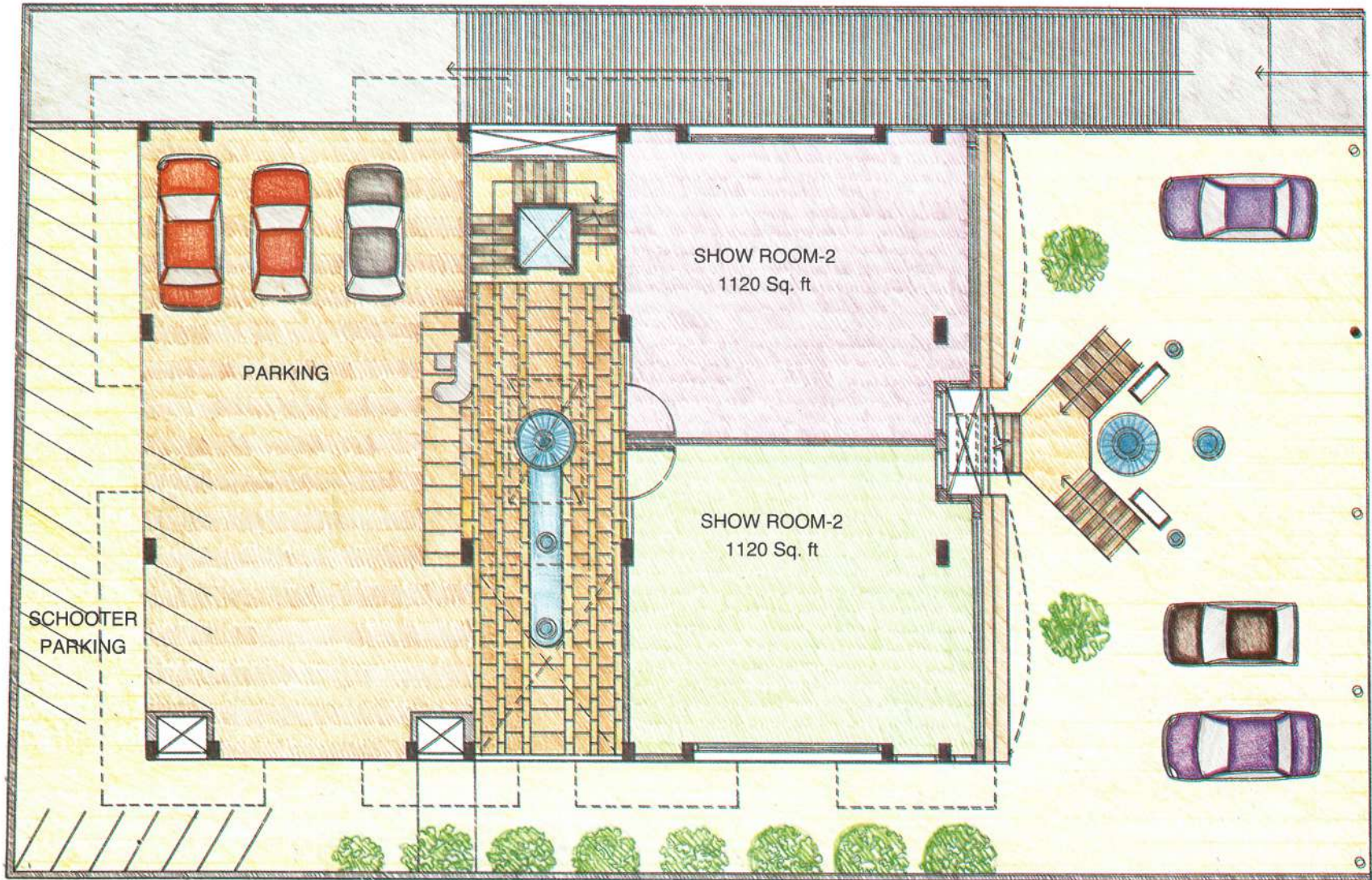
# PALM SPRING



# GROUND FLOOR PLAN



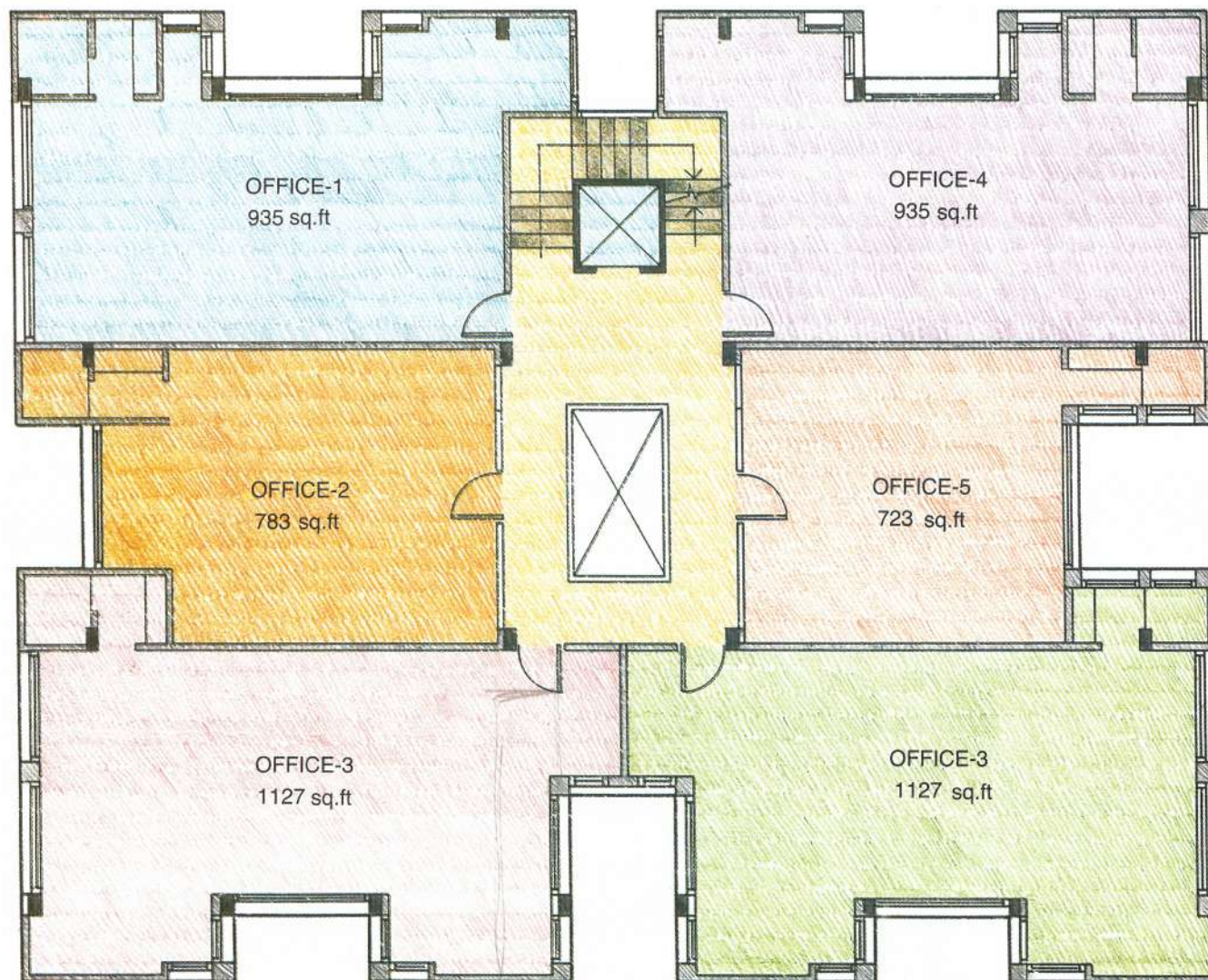
# PALM SPRING



# TYPICAL FLOOR PLAN



# PALM SPRING



# FOURTH FLOOR PLAN



# PALM SPRING



## General specifications

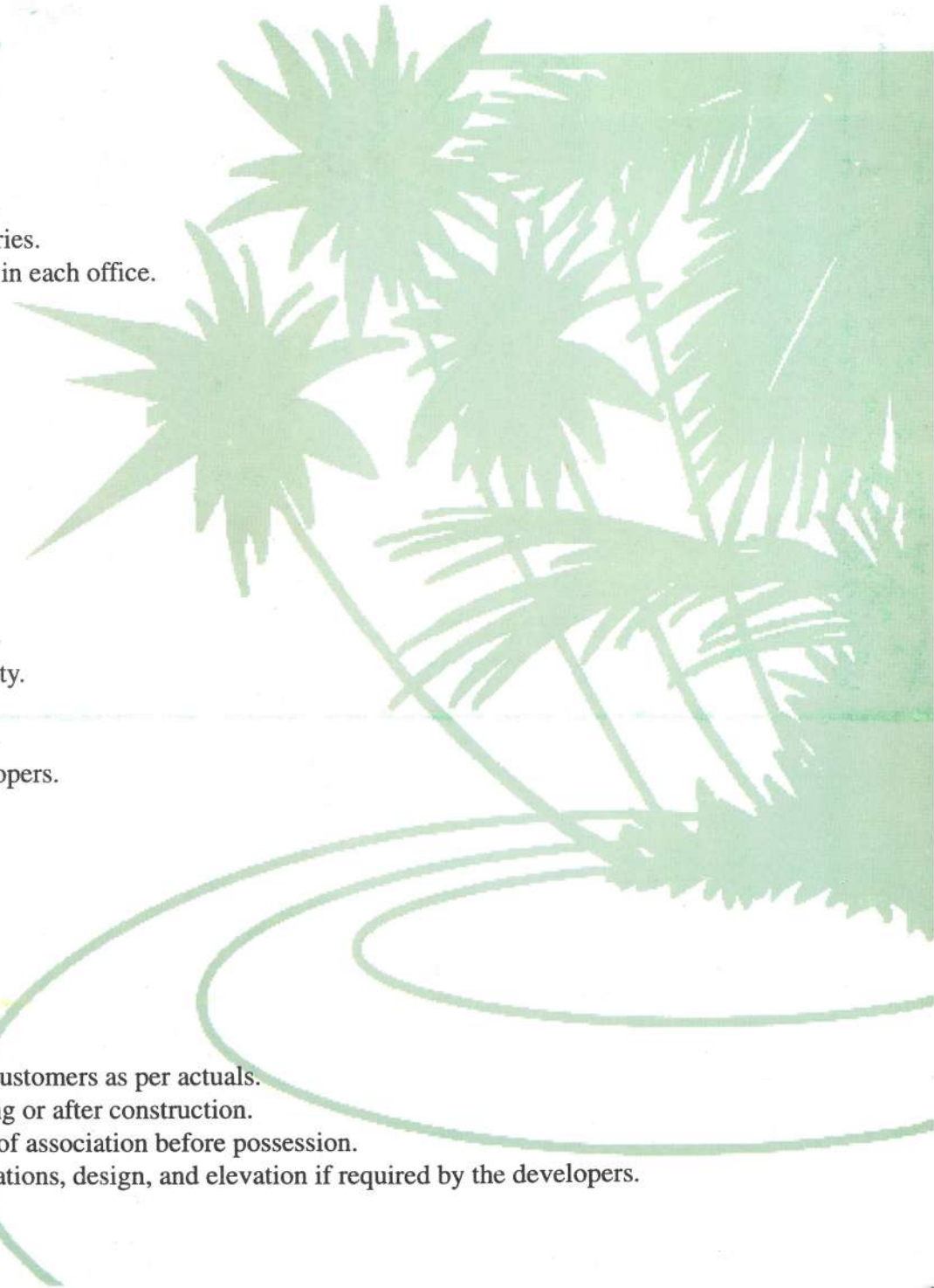
1. Ceramic tiles flooring in all offices.
2. Main door with teak wood finish and brass fittings.
3. Concealed copper wiring with ISI approved accessories.
4. Air conditioner, computer telephone and T.V. point in each office.
5. Efficient plumbing system with standard fittings.
6. All toilets with glazed tiles.

## Attractive features

1. Granite and marble finished foyer.
2. Standard company lift.
3. 24 hour portable water supply with bore facility.
4. 4 telephone lines with EPABX and intercome facility.
5. Common water cooler with water purifier.
6. 3 phase electricity supply to each individual office.
7. Shoe shine machine at reception installed by developers.
8. Security services round the clock.
9. Generator facility for common lift and passages.

## Terms & Conditions

1. Legal AEC & AMC charges will be borne by the customers as per actuals.
2. No changes in the elevation will be permitted during or after construction.
3. Maintenance deposit will be collected in the name of association before possession.
4. Developers reserve the right to change the specifications, design, and elevation if required by the developers.





### Organiser :

Shri Parshwa Estate Developers  
Tel: 6578520, 7482379, 2144527

### Architect :

Yogesh Shah  
Tel: 6636158, 6610049

### Structural Engineer

Jignesh Gandhi

### Office :

6, Shanti Sadan Society, Near Collegian Restaurant, Parimal, Paldi, Ahmedabad-380006